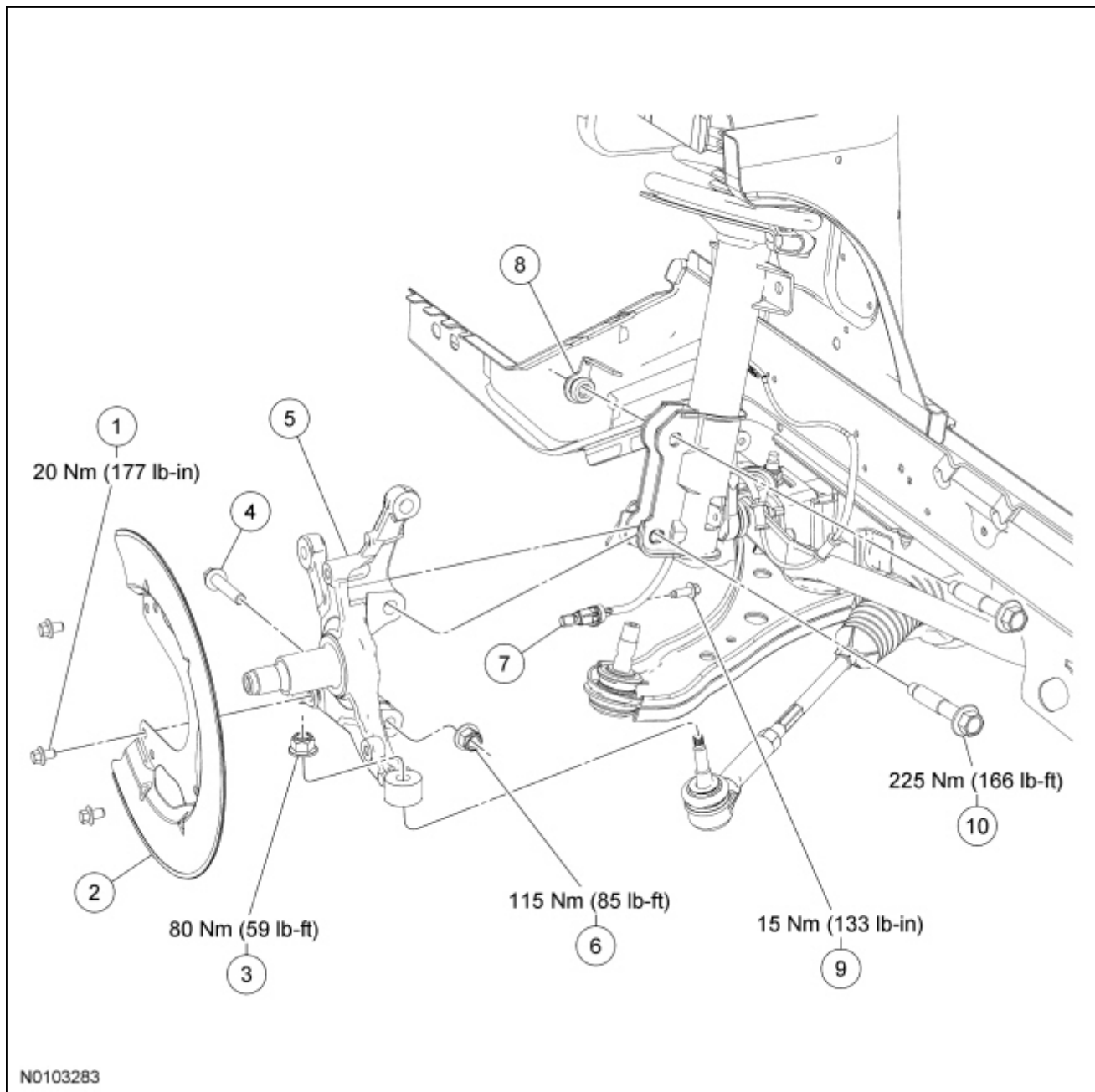


Wheel Spindle

Special Tool(s)

 <p>ST1106-A</p>	<p>Tie-Rod End Remover 211-001 (TOOL-3290-D) or equivalent</p>
---	--

NOTE: 4.0L and 4.6L shown, 5.4L similar.



N0103283

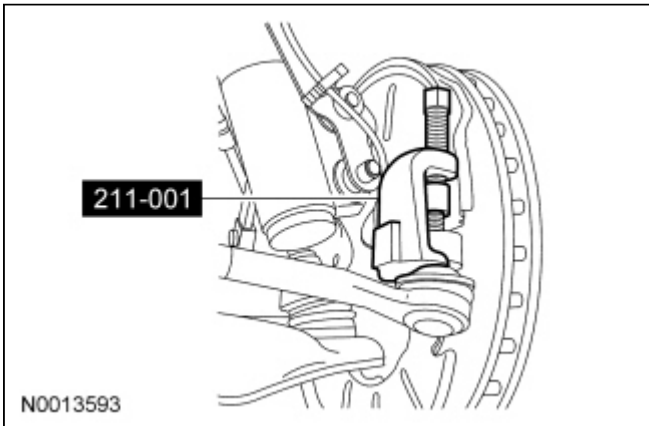
Item	Part Number	Description
1	W500020	Brake disc shield bolt (3 required)
2	2K004	Brake disc shield
3	W705606	Tie-rod end nut
4	W711123	Lower ball joint bolt
5	3107 LH/3108 RH	Wheel spindle
6	W520214	Lower ball joint nut
7	2C204	Wheel speed sensor
8	W714653	Strut-to-wheel spindle flangnut (2 required)
9	7960825	Wheel speed sensor bolt
10	W714652	Strut-to-wheel spindle bolt (2 required)

Removal and Installation

NOTICE: Suspension fasteners are critical parts because they affect performance of vital components and systems and their failure may result in major service expense. New parts must be installed with the same part number or equivalent part, if replacement is necessary. Do not use a replacement part of lesser quality or substitute design. Torque values must be used as specified during reassembly to make sure of correct retention of these parts.

1. Remove the wheel bearing and hub assembly. For additional information, refer to [Wheel Bearing and Wheel Hub](#) in this section.
2. Remove the 3 bolts and the brake disc shield.
 - To install, tighten to 20 Nm (177 lb-in).
3. Remove the wheel speed sensor bolt and position the sensor aside.
 - To install, tighten to 15 Nm (133 lb-in).
4. Remove and discard the tie-rod end nut.
 - To install, tighten the new nut to 80 Nm (59 lb-ft).
5. **NOTICE:** Use care not to damage the tie-rod end dust boot when using the Tie-Rod End Remover.

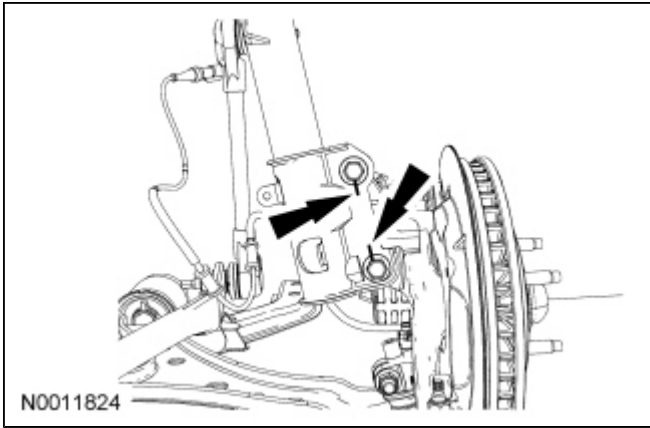
Using the Tie-Rod End Remover, disconnect the tie-rod end from the front wheel spindle.




6. Support the front suspension lower arm with a jackstand.
7. Remove and discard the lower ball joint nut and bolt.
 - To install, tighten the new nut to 115 Nm (85 lb-ft).
8. **NOTICE:** Use care not to damage the lower ball joint boot while separating the lower control arm and the wheel spindle.

Separate the lower control arm and the wheel spindle.

9. If equipped, index-mark the 2 strut-to-spindle cam bolts.



10.  **WARNING:** Do not apply heat or flame to the shock absorber or strut tube. The shock absorber and strut tube are gas pressurized and could explode if heated. Failure to follow this instruction may result in serious personal injury.

 **WARNING:** Keep all body parts clear of shock absorbers or strut rods. Shock absorbers or struts can extend unassisted. Failure to follow this instruction may result in serious personal injury.

NOTE: If equipped, **do not** discard the strut-to-spindle cam nuts and bolts.

Remove and discard the strut-to-spindle bolts and flagnuts.

- To install, tighten the new bolts to 225 Nm (166 lb-ft).

11. Remove the wheel spindle.
12. To install, reverse the removal procedure.
13. Check and, if necessary, align the front end. For additional information, refer to [Section 204-00](#).
-